

Complete control over print, copy, scan and fax

v13

PaperCut MF is a simple, low cost application that reports and manages, user activity in printers and multi-function devices.



Supported Platforms

Eliminate waste, encourage responsible behavior, and make users and departments accountable for their usage.

PaperCut MF includes embedded software that runs on your copier/MFD to enable tracking, control and secure print release directly from the device's panel.

PaperCut MF is easily configured and is suitable for sites of any size regardless of environment, platform or MFD/printer make and model. PaperCut's solutions are currently in use in over 50,000 sites worldwide and translated into 25 languages, making PaperCut MF a product you can both trust and easily afford.

- Track all MFDs / Printers
- Secure Print Release
- Control and Report Use
- Recover Costs
- Enforce Print Policy
- Minimize Waste
- Web Print
- Ipad printing

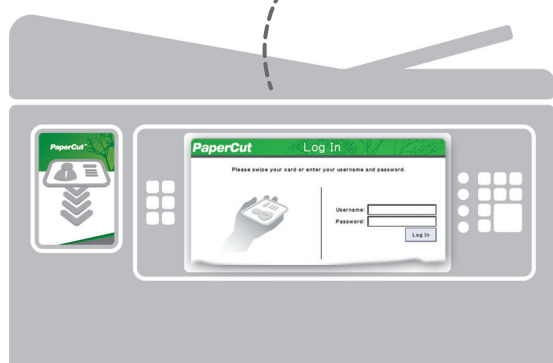
PaperCut Account Selection		Log Out
My Personal Account	History Department	Prev 1/2 Next
Art Department	Language Department	
English Department	Maths Department	

From List Search

Sample embedded screens

PaperCut Print Release		Log Out
Email - Mozilla Firefox	Prev	User: tom Time: 8:37 AM Client: tom-pc Pages: 12 Cost: \$1.20 Print Job Cancel Job
Untitled1 - OpenOffice.org Writer	1/2	
Microsoft Word - list.doc	Next	
Refresh Release All		

PaperCut MF 10.5.11567



sales@ecoprintq.com

PaperCut MF™



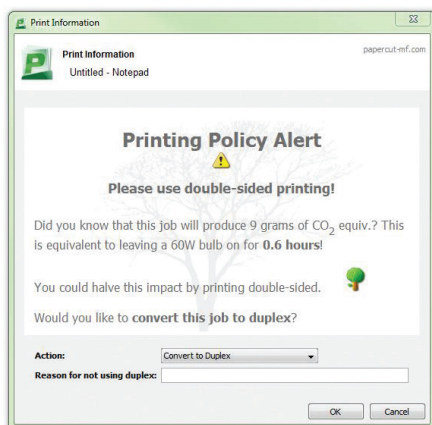
Why PaperCut MF?

Intuitive and Easy to Use

PaperCut MF is regarded as the simplest system of its type to deploy and manage. System administrators have full access to administration and configuration via a familiar web interface.

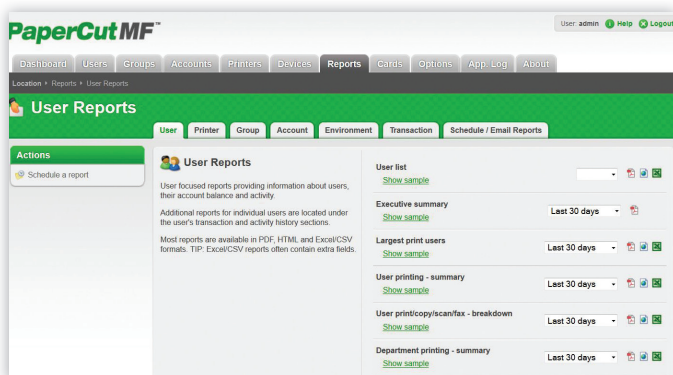
It offers:

- User directory (eg. Active Directory and others) integration and automatic user account creation
- Secure print release and Find-Me printing
- Administrator dashboard with real-time status updates
- Web Print: Driverless printing for wireless devices
- Optional client and account billing
- Ability to encourage responsible use via popup notifications



Detailed Reporting

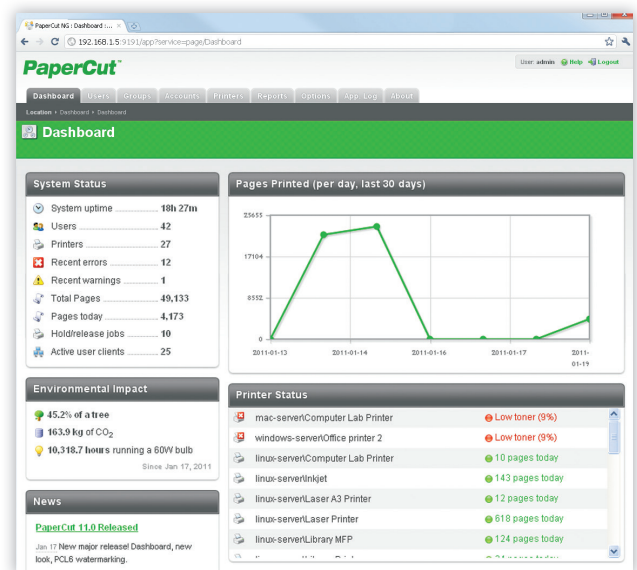
PaperCut includes over 50 one-click reports available for online viewing, printing or export. Reports address all areas ranging from detailed page logs to summaries by user, department, device or environmental impact. Administrators can create ad-hoc reports by applying filter conditions and reports can be emailed to specified people on a regular schedule. More information is at www.papercut.com/tour/report/



Web Based Administration

PaperCut MF provides “out of the box” browser-based administration access from any network location enabling centralised management of every user and device. Web technologies make cross-platform support easy as there is no need for additional software to be installed and no web server configuration.

A key feature of the administration interface is the dashboard tab – an easy-to-read single page view of the printing environment for administrators. The Dashboard page utilises a number of gadgets to present key real time information, such as, system activity and status updates, along with trend information and statistics from past activity, such as, number of pages printed and environmental impact measures.



Powerful Job Scripting

Advanced scripting can be used to define and finely tune your printing policy and support your organization in eliminating waste and changing user behavior. With PaperCut you can:

- Automatically route large jobs to detected high volume printers
- Discourage printing of emails via popup print policy warnings
- Encourage double sided printing
- Discourage or disable color printing by user group
- Least cost routing (suggest more cost effective devices based on conditions)
- Allow free printing (e.g. during class times)
- Define action by job attribute, user / group, period of day, device feature / type

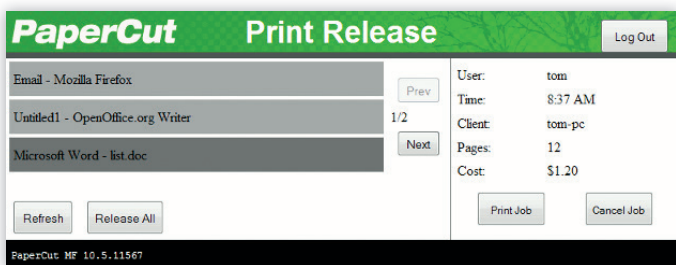


See environmental impact at a glance with the Paper-Less Alliance widget

Secure Print Release

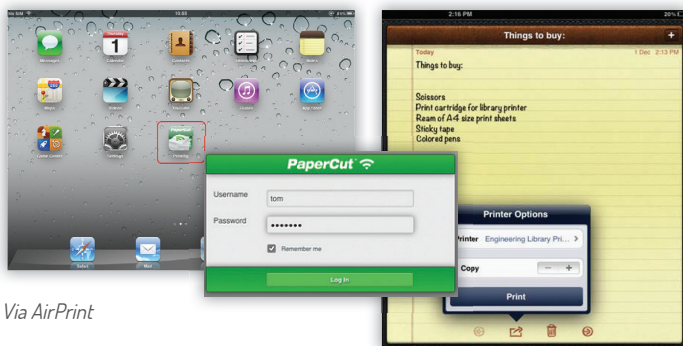
PaperCut's Find-Me printing feature enables users to print to a global virtual queue. Jobs are paused and only printed when the user releases the job at any compatible MFD/prINTER:

- Improved document security and convenience.
- Reduce IT administrators needed to manage multiple print drivers and queues for both workstations and notebooks.
- Find-Me printing minimizes waste and has been shown to reduce printing output by up to 20% in busy office environments.
- Support for multiple release methods ranging from auto release on authentication to active release job-by-job.



End users can view and manage held print jobs at the MFD

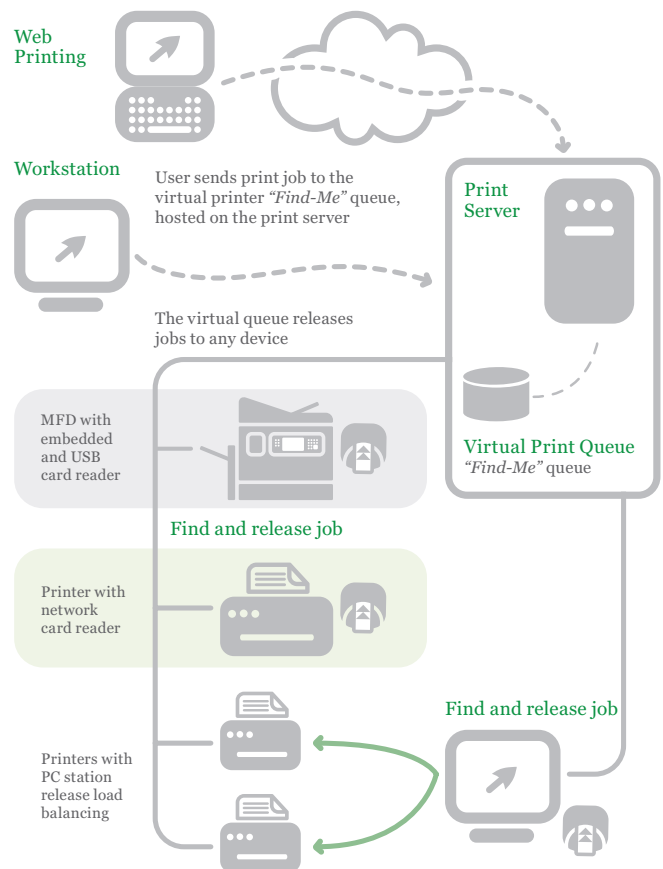
iPhone & iPad Printing



Via AirPrint

Secure Device Access

One of the key features is user authentication – only allowing device access to authorized users. At the simplest level users can authenticate with network username and password via an onscreen keyboard. In addition many environments will implement ID card authentication. Card numbers can be extracted from your network's user directory or a database (e.g. door access control system), alternatively users can self-associate their card on first-use.



Driverless Web Printing

Web Print has the potential to enable wireless and driverless printing from any mobile device, including laptops and netbooks. Combined with PaperCut's Find-Me printing feature, users can securely release their job from any supporting MFD/Printer. Web Print is simple to deploy and use and is fully integrated into PaperCut's standard print charging, accounting and quota account methods.

Mobile Print Release

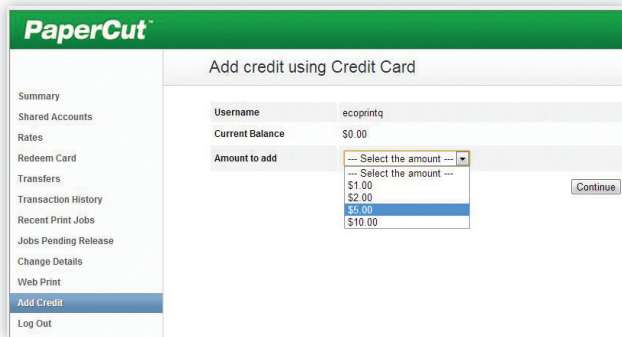
Print release option that can be used by any organization where users can access the site WIFI with a smart phone. It's quick, easy, cost effective and doesn't require a hardware investment. This is made possible by connecting to the PaperCut Web Print Release Module via a web browser.



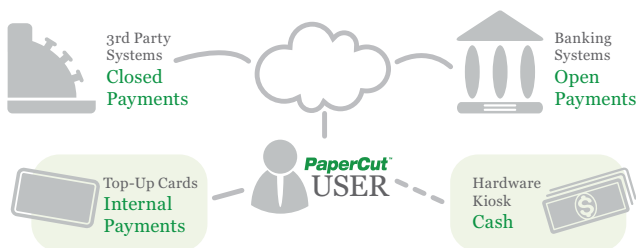
PaperCut in Education

Payment Gateways

Give end users the ability to make payments into their PaperCut account using payment gateways. Payment gateways allow third party systems to connect to PaperCut in a supported manner. Common gateways include leading providers like PayPal and Authorize.Net which allow real-time online payments via credit card. PaperCut also supports closed or internal payment systems such as a main college funds account. Hardware gateways are available to support a range of cash loaders, self-service kiosks and bill and coin boxes. For hardware, please refer to a PaperCut MF Authorized Solution Center.

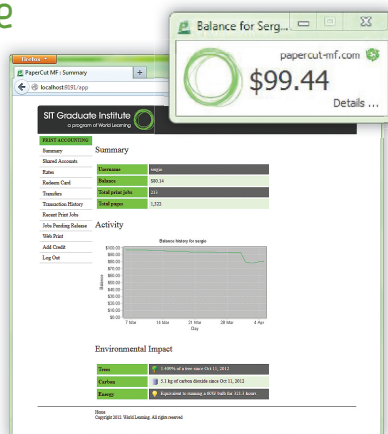


End users can easily manage their account balances and add credit via online



User Web Interface

End users have access to a set of web tools to track their own activity in real-time, query their account balances, and view their transactions – without the need for intervention from administrators. The end user interface is fully customizable, so you can design a look and feel to match your website or intranet pages.



Managing Quotas

Users can operate in either credit or debit with defined account rules including how and how often an account is credited. Use network groups to define how additional quota/credit is assigned. Use network groups to define how additional quota/credit is assigned. For example, allowing a specific group of users to accumulate their quota while others operate on a “use it or lose it” basis.

On-Line Web Cashier

Web Cashier is a basic Point of Sale (POS) system to charge items to PaperCut accounts and deposit funds into users' accounts. It is a standard product feature.

Technical Specifications

Scalability:

- Suitable for networks of 5 to 500,000+ users

Architecture:

- Single server or multi-server environments
- Monitor locally attached printers
- Client software is optional
- Available in 20+ languages and currency formats world-wide

Licensing:

- Enterprise-wide license: unlimited printers, servers, and workstations
- Licensed based on number of end users, plus a per-device license for MFD's running embedded software
- Premium Upgrades Assurance included for first 12 months

Open Systems:

- Open documented database scheme
- XML Web Services API with sample code

Supported Server

Operating Systems:

- Microsoft Windows Server (any edition including 64-bit and server core)
- Mac OS X Server (10.4 or higher)
- Linux (any modern distribution)
- Novell OES Linux and iPrint

Supported User

Directory Services:

- Active Directory (native integration including nested groups and OU's)
- OpenDirectory
- eDirectory
- LDAP
- NIS, PAM, Samba, and others

Supported Workstation

Operating Systems:

- Microsoft Windows (any edition)
- Mac OS X (10.4 or higher)
- Linux (any modern distribution)
- Unix Workstation (Java required to run client software)

MFDs/Printers:

- Almost all major digital laser inkjet and wide format devices supported
- Supported print languages: PCL, PCL6, HPGL, Postscript, PCLGUI, Ricoh RPCS, Epson ESC, QPDL, various GDI printers and many unnamed languages that are available

Supported Database Servers:

- Self managing internal database: suitable for up to 5,000 end users
- Microsoft SQL Server 2000/2005/2008 (either 32 or 64 bit)
- Microsoft SQL Express 2005/2008 (free from Microsoft)
- PostgreSQL 7.1 or higher
- MySQL 5.0 or higher
- Oracle 9.2 or higher

Supported Cluster

Environments:

- Microsoft Failover Server
- Microsoft Cluster Server
- Veritas Cluster Server
- Linux HA

Encryption:

- SSL encryption used for sensitive client server communication.



Environmentally friendly – conserve a tree and its ecological habitat.

Call us now: 800.236.8499 | Email us: info@ecoprintq.com | www.ecoprintq.com